

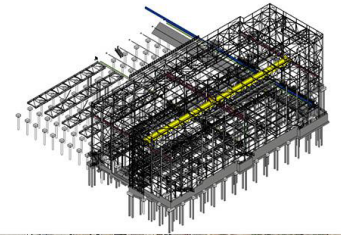


# Cargo building for Airbus Beluga (FLY10K)

Getafe, Spain / 2015

Structural type  
Owner  
Client  
Constructor  
Scope

steel structure  
AIRBUS  
Sacyr  
Sacyr  
detailed design



In September 2015, SACYR contracted FHECOR Ingenieros Consultores to develop the structural analysis of the industrial unit for the loading and unloading of the Beluga at the Airbus factory in Getafe



C/ Barquillo 23, 2º | 28004 Madrid | España  
T. (+34) 917 014 460 | F. (+34) 915 327 864  
[www.fhecor.com](http://www.fhecor.com) | [fhecor@fhecor.es](mailto:fhecor@fhecor.es)